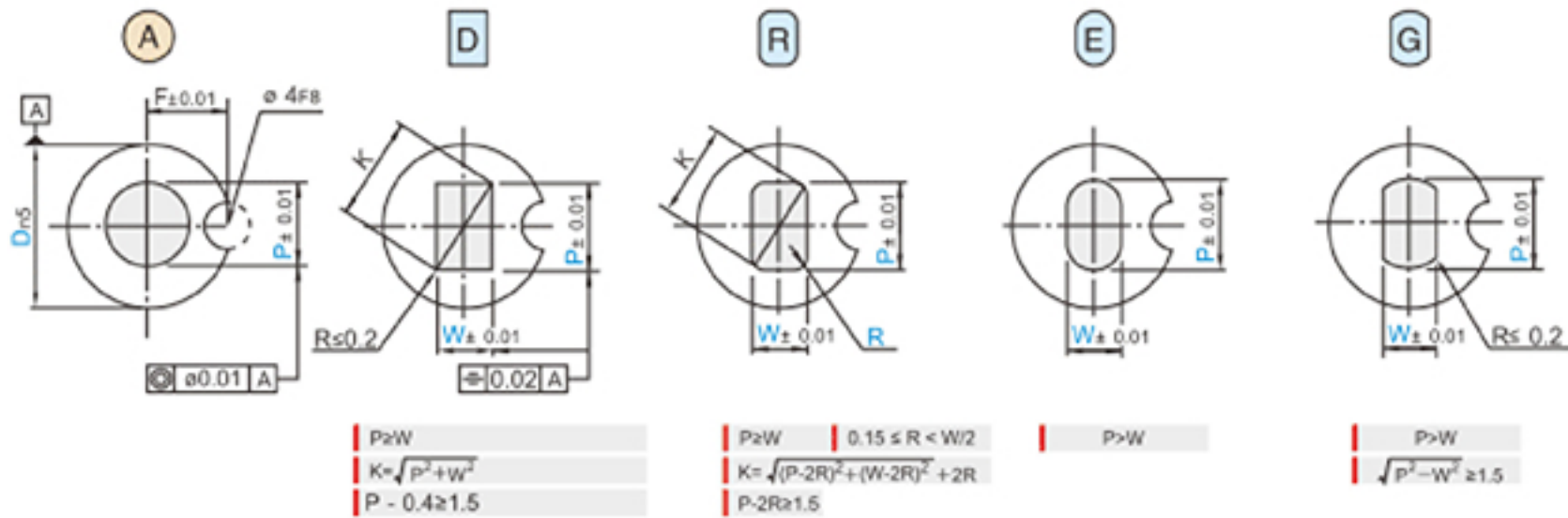
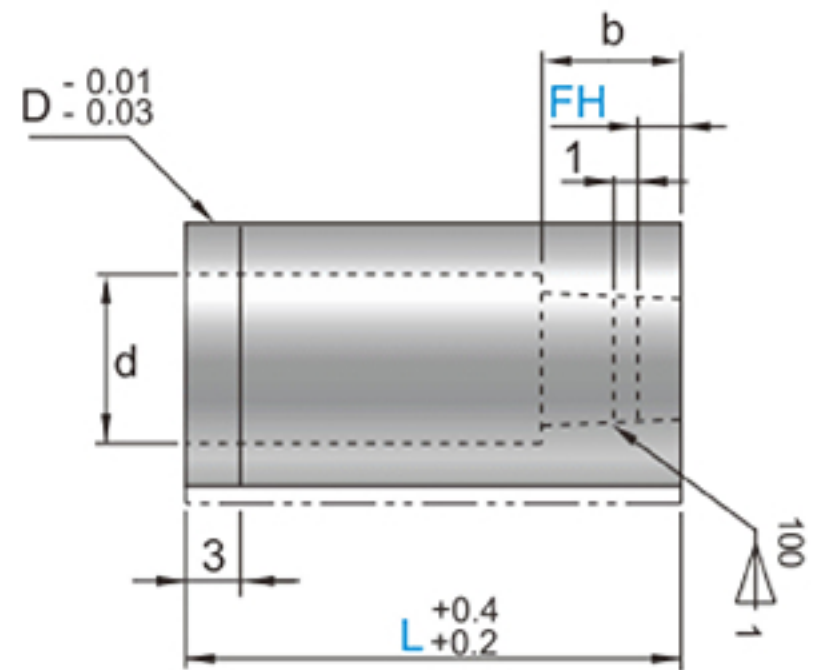


SRT-WKSD
SRT-WKD



			Catalog No.
M	M	A	Type
SKD11	60~63HRC	MS4-15	<div> <div>Ⓐ</div> <div>Ⓐ</div> <div>Ⓐ</div> <div>Ⓐ</div> </div> <div> <div>Ⓐ</div> <div>Ⓐ</div> <div>Ⓐ</div> <div>Ⓐ</div> </div>

ORDER	Catalog No.	L	P	W	R (Ⓐ)	MT	C	TS	FH
	SRT-WKSD 16	25	P9.0			MT1.0	C0.1	H	FH2.0

D	Catalog No.	L	Ⓐ	Ⓐ	Ⓐ	Ⓐ	Ⓐ	MT	C	TS	FH	b	d	F
n5	Type	D	P	P·Kmax.	P·Wmin.	R	R							
+0.018 +0.016 +0.020 +0.012	Ⓐ SRT-WKSD	10	2.00 ~ 6.00	6.00	2.00	0.15	MT≥0.5	C≥0.060			1.0 ~ 5.0	6	6.4	6.0
	Ⓐ SRT-WKDD	13	3.00 ~ 8.00	8.00	2.00								8.4	7.5
	Ⓐ SRT-WKDR	16	5.00 ~ 10.00	10.00	2.00								10.6	8.0
	Ⓐ SRT-WKDE	20	7.00 ~ 12.00	12.00	3.00						1.0 ~ 7.0	8	12.6	10.0
+0.024 +0.015	Ⓐ SRT-WKDG	25	10.00 ~ 16.00	16.00	3.00	Ⓐ		C≥0.060					14.6	11.0



	(N/mm ²)
H	800 ~
M	600 ~
L	~ 599

